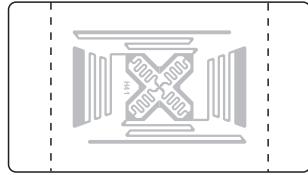
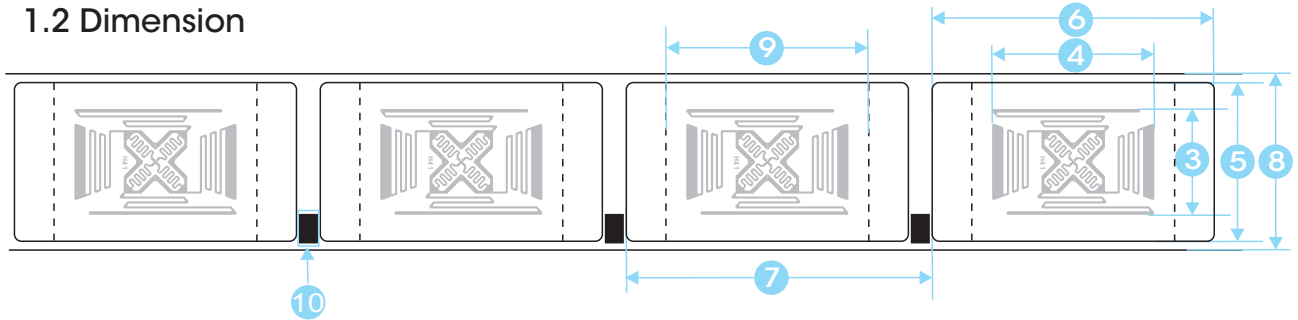


1. Physical Feature

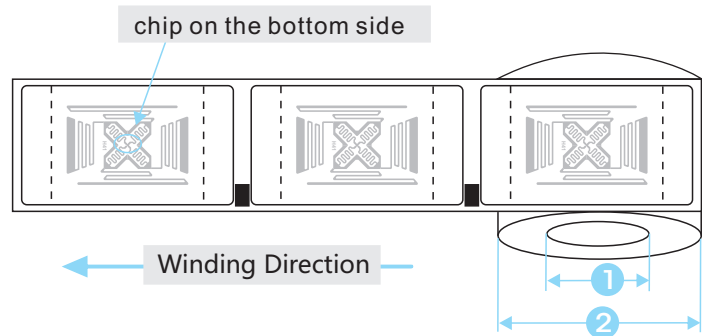
1.1 Picture



1.2 Dimension



NO.	Item	Dimension mm
1	Core ID	3inch (76.2±0.5)
2	Roll OD	≤210
3	Antenna Length	30±0.5
4	Antenna Width	46±0.5
5	Label length	45±0.5
6	Label width	80±0.5
7	Label pitch	86.783±0.5
8	Release paper width	50±1
9	inlay Width	57.856±0.5
10	Mark	5*8



2. Electrical Specification

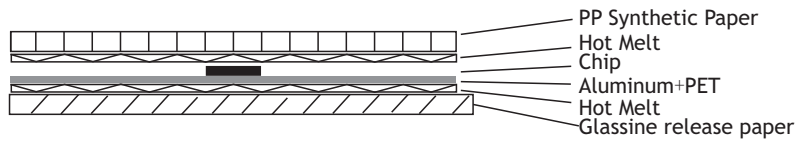
Item	Description	Remark
IC	Impinj/Monza4D	
Substrate	PET	
Antenna Process	Aluminum ETCH (AL 9um)	
Protocols Supported	ISO/IEC 18000-6C EPC Class1 Gen2	
EPC	128 Bits	Read/write
TID	48 Bits	Read only
Password	32Bits Allers Password 32Bits Kill password	Read/write
User Memory	32 Bits	Read/write
Operating Frequency	860~960MHz	
Operating Mode	Passive	
Write Cycles	100,000	
ESD-HBM/CDM	2000V	HBM

3. Operating Warning

- 3.1 Inlays with black ink dot are for bad products, do not use. Position is shown on the right.
- 3.2 When carrying and applying inlays, keep away from water, violent bump and squeezing.
- 3.3
 Operating Limits : - 40 ~ 70°C / 20% ~ 90% RH.
 Storage Limits : - 20 ~ 50°C / 20% ~ 90% RH (Without condensation).
 The recommended storage temperature : 20 ~ 30°C / 50% RH.



4. Fault Structure



5. Package

Inlay Format in roll

Delivery Format 1000±10pcs/roll , 4 rolls /carton

Package Format 1, Waterproof, anti-collision, antistatic
 2, In antistatic bags