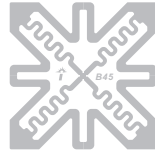
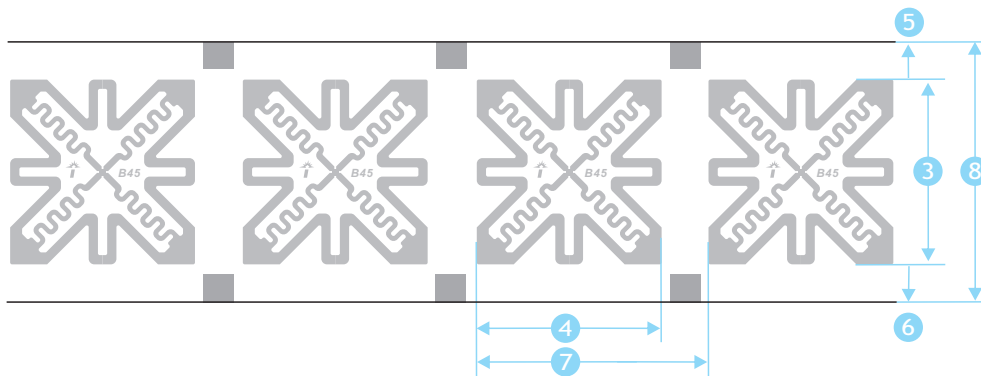


1. Physical Feature

1.1 Picture



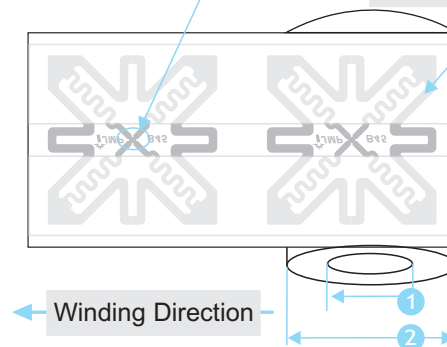
1.2 Dimension



NO.	Item	Dimension mm
1	Core ID	6inch (152.4±0.5)
2	Roll OD	≤350
3	Antenna Length	20±0.5
4	Antenna Width	20±0.5
5	Web Width-a	14±0.5
6	Web Width-b	14±0.5
7	Inlay Pitch	32.544±0.5
8	Web Width	48±0.5

Chip is under the antenna

Interleaf width:21mm



2. Electrical Specification

Item	Description	Remark	
IC	Impinj/Monza4D/4E/4QT		
Substrate	PET		
Antenna Process	Aluminum ETCH(AL 9um)		
Protocols Supported	ISO/IEC 18000-6C		
	EPC Cglobal		
	EPC	128/496/128 Bits	Read/write
	TID	48/48/48 Bits	Read only
	Password	32Bits Allers Password 32Bits Kill password	Read/write
	User Memory	32/128/512Bits	Read/write
Operating Frequency	860~960MHz		
Operating Mode	Passive		
Write Cycles	100,000		
ESD-HBM/CDM	2000V	HBM	

3. Operating Warning

3.1 Inlays with black ink dot are for bad products, do not use. Position is shown on the right.

3.2 When carrying and applying inlays, keep away from water, violent bump and squeezing.

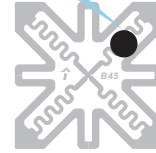
3.3

Operating Limits : - 40 ~ 70°C / 20% ~ 90% RH.

Storage Limits : - 20 ~ 50°C / 20% ~ 90% RH(Without condensation).

The recommended storage temperature : 20 ~ 30°C / 50% RH.

Marking of bad ones



4. Package

Inlay Format in roll

Delivery Format 20000±100pcs/roll , 1rolls /carton

Package Format	1,Each roll of inlay has two strips of 21mm-width glassine paper as mounts to protect chip and antenna, so as to avoid extrusion and water vapor.
	2,Waterproof, anti-collision, antistatic
	3,In antistatic bags