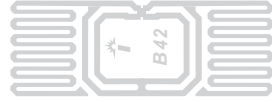
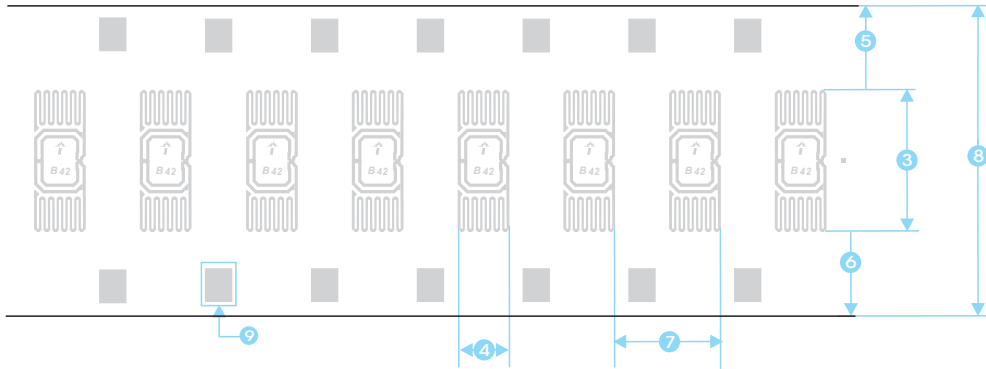


1. Physical Feature

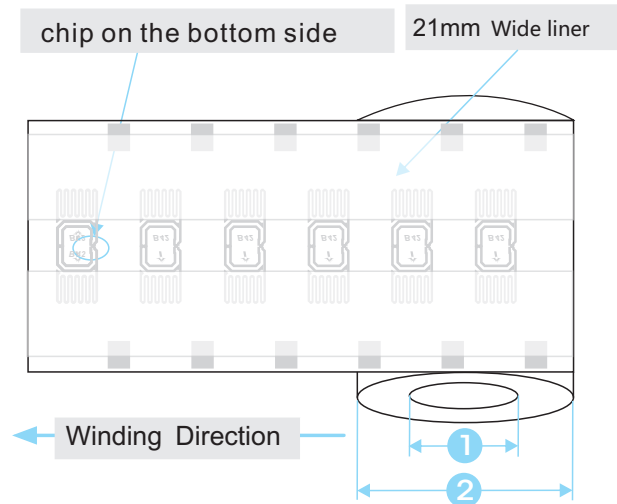
1.1 Picture



1.2 Dimension



NO.	Item	Dimension mm
1	Core ID	6inch (152.4±0.5)
2	Roll OD	≤350
3	Antenna Length	22±0.5
4	Antenna Width	8±0.5
5	Width	13±0.5
6	Width	13±0.5
7	Inlay pitch	16.4±0.5
8	Release paper width	48±1
9	Mark	4*5



2. Electrical Specification

Item	Description	Remark
IC	Impinj/Monza4E/4D/4QT	
Substrate	PET	
Antenna Process	Aluminum ETCH (AL 9um)	
Protocols Supported	ISO/IEC 18000-6C EPC Class1 Gen2	
EPC	128/496/128 Bits	Read/write
TID	48 /48/48 Bits	Read only
Password	32Bits Allers Password 32Bits Kill password	Read/write
Use	32/128/512 Bits	Read/write
Operating Frequency	860~960MHz	
Operating Mode	Passive	
Write Cycles	100,000	
ESD-HBM/CDM	2000V	HBM

3. Operating Warning

3.1 Inlays with black ink dot are for bad products, do not use. Position is shown on the right.

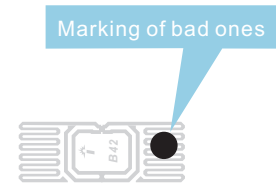
3.2 When carrying and applying inlays, keep away from water, violent bump and squeezing.

3.3

Operating Limits : - 40 ~ 70°C / 20% ~ 90% RH.

Storage Limits : - 20 ~ 50°C / 20% ~ 90% RH(Without condensation).

The recommended storage temperature : 20 ~ 30°C / 50% RH.



4. Package

Inlay Format i n r o l l

Delivery Format 20000±100pcs/roll , 1 rolls /carton

Package Format 1,Waterproof, anti-collision, antistatic
 2,In antistatic bags
