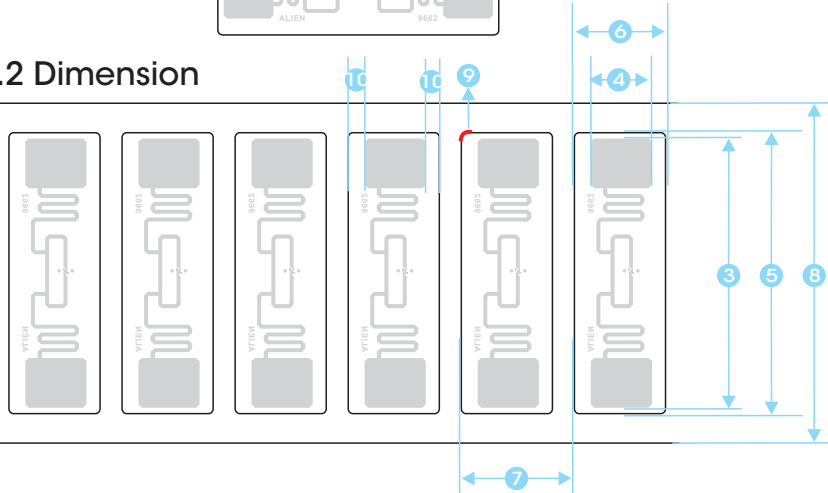


## 1. Physical Feature

### 1.1 Picture

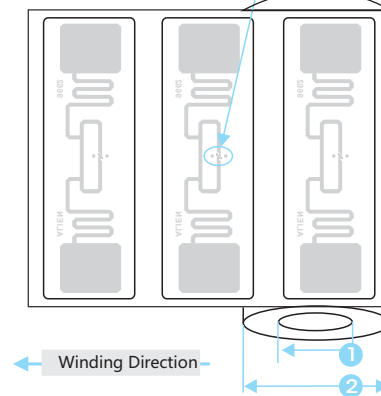


### 1.2 Dimension



NO.	Item	Dimension mm
1	Core ID	3inch (76.2±0.5)
2	Roll OD	≤185
3	Antenna Length	70±0.5
4	Antenna Width	17±0.5
5	Inlay length	74±0.5
6	Inlay width	24±0.5
7	Inlay pitch	28.928±0.5
8	Release paper width	84±0.5
9	Radius of rounded corner	R2
10	Distance from antenna to edge	3.5±0.5

Chip is located between antenna and release paper



## 2. Electrical Specification

Item	Description	Remark
IC	Alien/Higgs3	
Substrate	PET	
Antenna Process	Aluminum ETCH (AL 9um)	
Protocols Supported	ISO/IEC 18000-6C EPC Class1 Gen2	
EPC	96Bits	Read/write
TID	64Bits	Read only
Password	32Bits Allers Password 32Bits Kill password	Read/write
User Memory	512Bits	Read/write
Operating Frequency	860~960MHz	
Operating Mode	Passive	
Write Cycles	100,000	
ESD-HBM/CDM	2000V	HBM

### 3. Operating Warning

3.1 Inlays with black ink dot are for bad products do not use. Position is shown on the right.

3.2 When carrying and applying inlays, keep away from water, violent bump and squeezing.

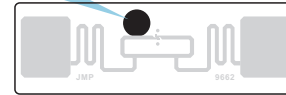
3.3

Operating Limits : - 40 ~ 70°C / 20% ~ 90% RH.

Storage Limits : - 20 ~ 50°C / 20% ~ 90% RH(Without condensation).

The recommended storage temperature : 20 ~ 30°C / 50% RH.

Marking of bad ones



### 4. Package

**Inlay Format** in roll

**Delivery Format** 5000±100pcs/roll , 4 rolls /carton

**Package Format** 1, Waterproof, anti-collision, antistatic  
2, In antistatic bags