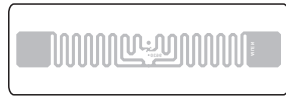
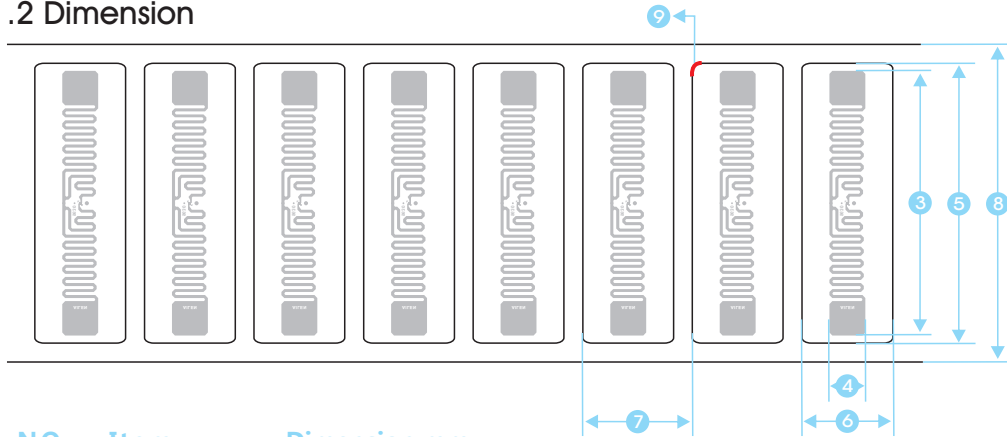


## 1. Physical Feature

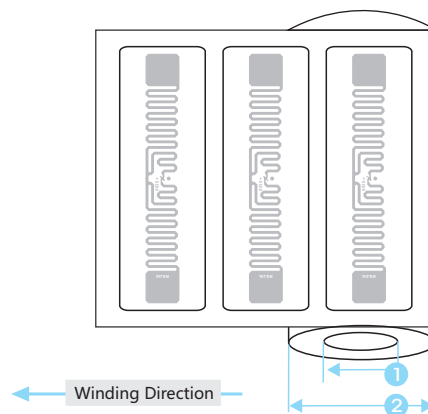
### 1.1 Picture



### 1.2 Dimension



| NO. | Item                     | Dimension mm        |
|-----|--------------------------|---------------------|
| 1   | Core ID                  | 3inch<br>(76.2±0.5) |
| 2   | Roll OD                  | ≤185                |
| 3   | Antenna Length           | 70±0.5              |
| 4   | Antenna Width            | 9.5±0.5             |
| 5   | Inlay length             | 74±0.5              |
| 6   | Inlay width              | 24±0.5              |
| 7   | Inlay pitch              | 28.928±0.5          |
| 8   | Release paper width      | 84±0.5              |
| 9   | Radius of rounded corner | R2                  |



## 2. Electrical Specification

| Item                | Description                                    | Remark     |
|---------------------|--|------------|
| IC                  | Alien/Higgs3                                   |            |
| Substrate           | PET  |            |
| Antenna Process     | Aluminum ETCH (AL 9um)                         |            |
| Protocols Supported | ISO/IEC 18000-6C<br>EPC Class1 Gen2            |            |
| EPC                 | 96Bits   | Read/write |
| TID                 | 64Bits   | Read only  |
| Password            | 32Bits Allers Password<br>32Bits Kill password | Read/write |
| User Memory         | 512Bits  | Read/write |
| Operating Frequency | 860~960MHz                                     |            |
| Operating Mode      | Passive  |            |
| Write Cycles        | 100,000  |            |
| ESD-HBM/CDM         | 2000V  | HBM        |