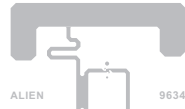
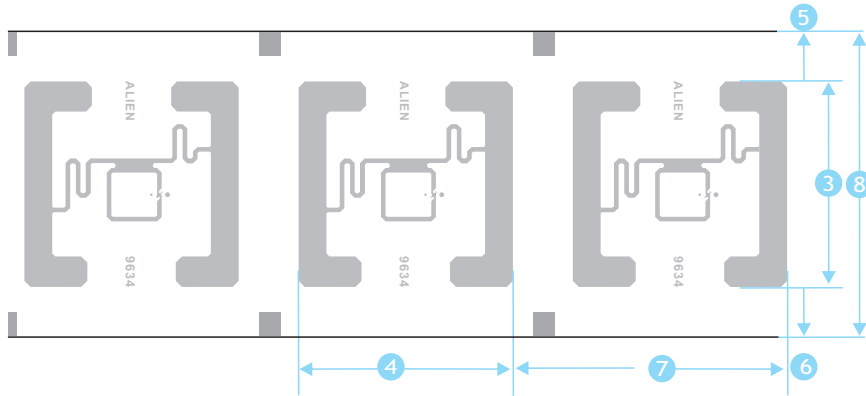


1. Physical Feature

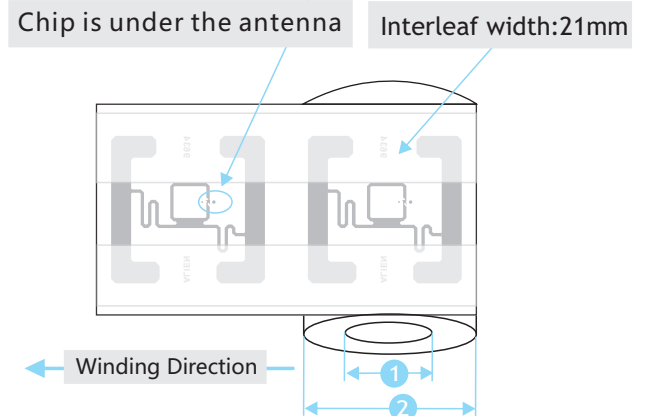
1.1 Picture



1.2 Dimension



NO.	Item	Dimension mm
1	Core ID	6inch (152.4±0.5)
2	Roll OD	≤350
3	Antenna Length	44±0.5
4	Antenna Width	46±0.5
5	Web Width - a	15.73±0.5
6	Web Width - b	20.27±0.5
7	Inlay Pitch	54±0.5
8	Web Width	80±0.5



2. Electrical Specification

Item	Description	Remark
IC	Alien/Higgs3	
Substrate	PET	
Antenna Process	Aluminum ETCH (AL 9um)	
Protocols Supported	ISO/IEC 18000-6C EPC Class1 Gen2	
EPC	96Bits	Read/write
TID	64Bits	Read only
Password	32Bits Allers Password 32Bits Kill password	Read/write
User Memory	512Bits	Read/write
Operating Frequency	860~960MHz	
Operating Mode	Passive	
Write Cycles	100,000	
ESD-HBM/CDM	2000V	HBM

3. Operating Warning

3.1 Inlays with black ink dot are for bad products, do not use. Position is shown on the right.

3.2 When carrying and applying inlays, keep away from water, violent bump and squeezing.

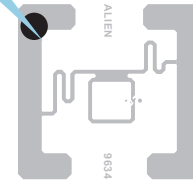
3.3

Operating Limits : - 40 ~ 70°C / 20% ~ 90% RH.

Storage Limits : - 20 ~ 50°C / 20% ~ 90% RH(Without condensation).

The recommended storage temperature : 20 ~ 30°C / 50% RH.

Marking of bad ones



4. Package

Inlay Format in roll

Delivery Format 10000±100pcs/roll , 1 rolls /carton

Package Format	1,Each roll of inlay has two strips of 21mm-width glassine paper as mounts to protect chip and antenna, so as to avoid extrusion and water vapor.
	2,Waterproof, anti-collision, antistatic
	3,In antistatic bags