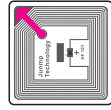
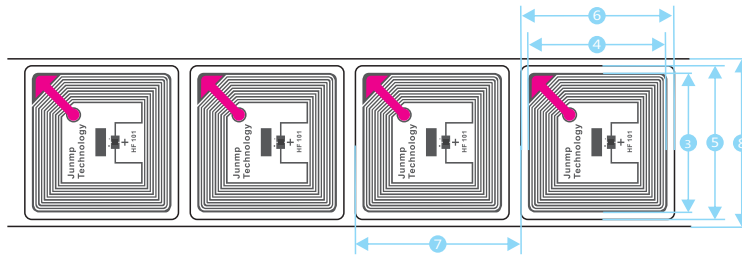


1. Physical Feature

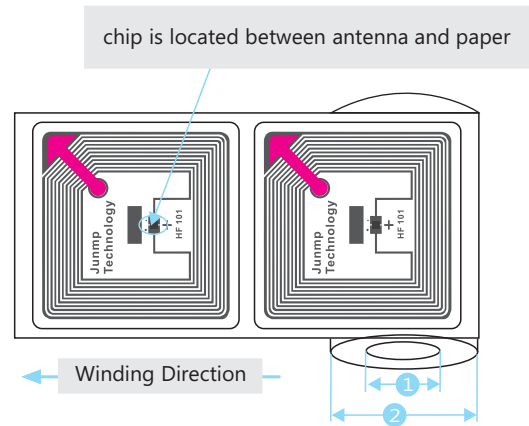
1.1 Picture



1.2 Dimension



NO.	Item	Dimension mm
1	Core ID	3inch (76.2±0.5)
2	Roll OD	≤185
3	Antenna Length	40±0.5
4	Antenna Width	40±0.5
5	Lable length	44±0.5
6	Lable width	44±0.5
7	Lable pitch	47.336±0.5
8	Release paper width	50±1



2. Electrical Specification

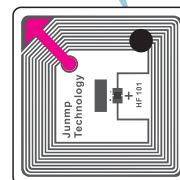
Item	Description	Remark
IC	QR 2213	
Substrate	PET	
Antenna Process	Aluminum ETCH (AL 9um)	
Protocols Supported	ISO/IEC 14443-3 Cascade 1eve1 2	
UID	80 Bits	Programing during fabrication
lock control	16 Bits	Field programmable read-only locking
OPT	32Bits	One time program area
User	384Bits	User data
Reserved	128Bits	Reserved
Operating Frequency	13.56MHz	
Operating Mode	Passive	
Write Cycles	100,000	
ESD-HBM/CDM	2000V	HBM

3. Operating Warning

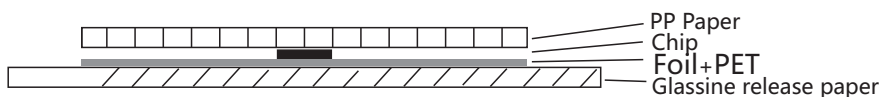
3.1 Inlays with black ink dot are for bad products, do not use. Position is shown on the right.
3.2 When carrying and applying inlays, keep away from water, violent bump and squeezing.

3.3
Operating Limits : - 40 ~ 70°C / 20% ~ 90% RH.
Storage Limits : - 20 ~ 50°C / 20% ~ 90% RH(Without condensation).
The recommended storage temperature : 20 ~ 30°C / 50% RH.

Marking of bad ones
Diameter 4±2mm



4. Fault Structure



5. Package

Inlay Format in roll

Delivery Format 5000±10pcs/roll , 4 rolls /carton

Package Format 1, Waterproof, anti-collision, antistatic
2, In antistatic bags