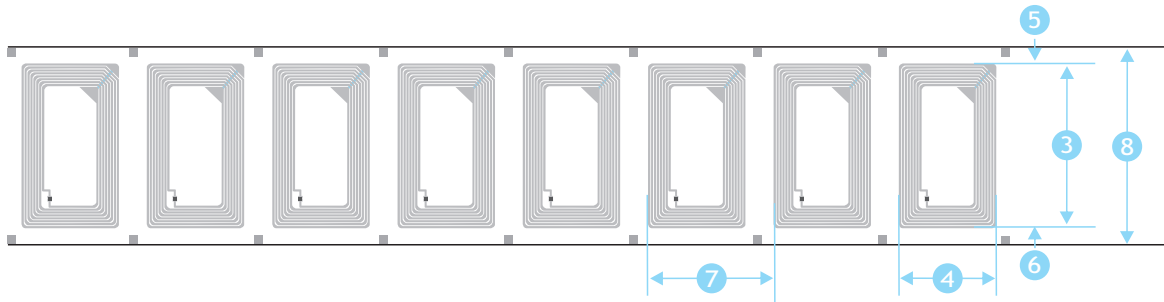


1. Physical Feature

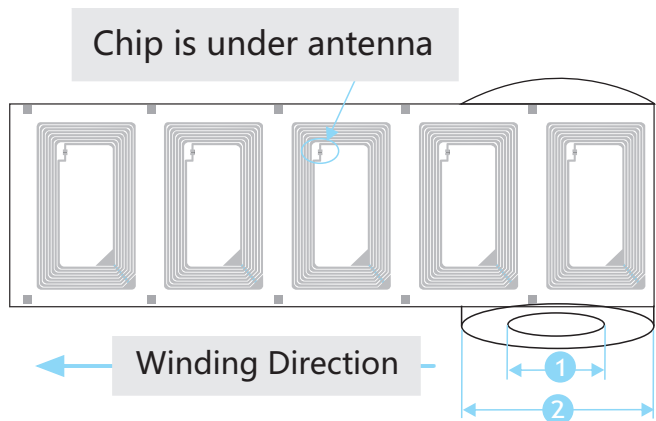
1.1 Picture



1.2 Dimension



NO.	Item	Dimension mm
1	Core ID	3inch (76.2±0.5)
2	Roll OD	≤185
3	Antenna Length	76±0.5
4	Antenna Width	45±0.5
5	web width	7.6±0.5
6	web width	7.6±0.5
7	Inlay pitch	57.856±0.5
8	Release paper width	91.2±0.5



2. Electrical Specification

Item	Description	Remark
IC	FM11RF08	
Substrate	PET	
Antenna Process	Aluminum ETCH(AL10+30um)	
Protocols Supported	ISO/IEC 14443-3	
User Memory	1024*8 Bit EEPROM	
Operating Frequency	13.56MHz	
Operating Mode	Passive	
Write Cycles	100,000	
ESD-HBM/CDM	2000V	HBM

3. Operating Warning

3.1 Inlays with black ink dot are for bad products, do not use. Position is shown on the right.

3.2 When carrying and applying inlays, keep away from water, violent bump and squeezing.

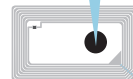
3.3

Operating Limits : - 40 ~ 70°C / 20% ~ 90% RH.

Storage Limits : - 20 ~ 50°C / 20% ~ 90% RH(Without condensation).

The recommended storage temperature : 20 ~ 30°C / 50% RH.

Marking of bad ones



4. Package

Inlay Format In roll

Delivery Format 5000±100pcs/roll , 6 rolls /carton

Package Format 1, Waterproof, anti-collision, antistatic
2, In antistatic bags